

STOMACH PHANTOM



Product Guidelines

- Designed for advanced endoscopic training, specializing in injection procedures and AI validation.

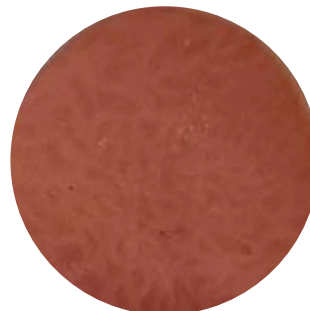
DESCRIPTION

The product is a high-fidelity 3D printed stomach anatomical model manufactured from a specialized blend of resins. Unlike standard market models, this phantom features injectable tissue capabilities, allowing for the realistic simulation of submucosal fluid injection and lifting (bleb formation). The advanced printing technology achieves varying consistencies and colours to replicate the organ with high fidelity in terms of tactile and visual texture. It is designed for multi-use with an extended shelf life compared to traditional biological or gel models.

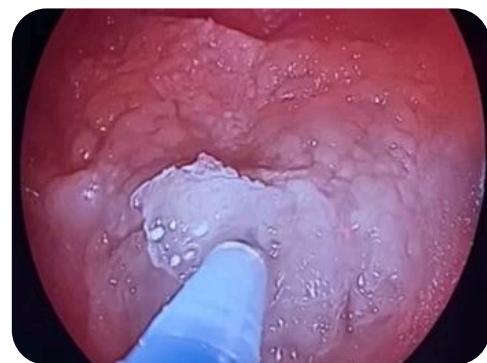
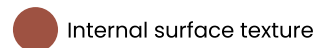


KEY FEATURES & PATHOLOGIES

- Multi-Pathological: Integrated with different types of lesions to simulate a wide range of clinical scenarios.
- Injectable Architecture: Allows for the training of injection-assisted procedures with realistic bleb formation.
- Realistic Texture: High-fidelity replication of the internal stomach surface for optimal endoscopic visualization.
- AI Training: "Pluri-pathological" variety supports the development and validation of AI diagnostic datasets.



ANATOMICAL COMPOSITION



WARNINGS AND SAFETY

Intended Use: This product is intended for educational purposes, specifically for endoscopic training and AI validation.