

LARYNX & AIRWAY PATHOLOGICAL PHANTOM



Product Guidelines

- Designed for advanced surgical training, specializing in pathology-specific simulations and pre-operative planning.

DESCRIPTION

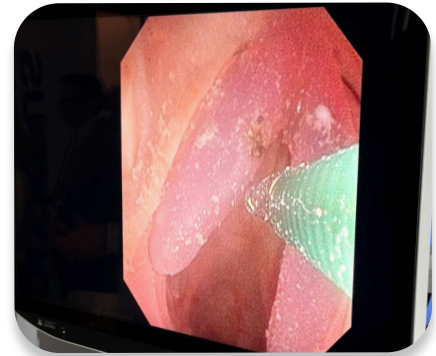
Designed for advanced ENT (Ear, Nose, and Throat) surgery training, this high-fidelity model addresses the limitations of traditional cadaveric and synthetic standards. This larynx and airway phantom features a multi-material structure that accurately replicates the physiological mechanical properties of airway tissues. The model integrates anatomical structures from the nose to the trachea, including pathological vocal cords, ensuring realistic haptic feedback for surgical simulation and laser response testing.



KEY FEATURES & PATHOLOGIES

- Tumor Resection Simulation: Specifically designed to train for vocal cord tumor removal using endoscopic and laser tools with realistic tissue resistance.
- Pathological Versatility: Features vocal cords capable of simulating multiple pathologies, allowing for targeted training on specific clinical conditions.
- Laser-Compatible Material: Engineered with materials that respond to laser energy exactly like real human tissue, facilitating high-fidelity surgical practice.

ANATOMICAL COMPOSITION



- VOCAL CORDS & MUCOSA
- PATHOLOGICAL LESIONS
- LARYNGEAL MUSCLES
- TRACHEAL RINGS & PHARYNX



WARNINGS AND SAFETY

Intended Use: This product is intended exclusively for educational and medical simulation purposes.